

CONNECTIONS

ORCHARD PLACE • SPRING/SUMMER 2022 ISSUE

"We're in this together" became a mantra for many during the height of the pandemic. From a mental health perspective, that phrase is taking on new meaning for me.

One of the unexpected graces of this time in our history is that more and more people are coming to realize that mental health doesn't only impact *other* people. It affects *all* of us.

We're all learning more about ourselves and what we need to feel our best which includes intentional self-care routines and building up our coping skills and resilience. We're also more likely to check-in on others and ask for help.

May is Mental Health month and we're asking for you to help us develop strong futures for the youth and families we serve. How can you help?

- **Reduce the Stigma** by talking about mental health. Remind yourself and others that "It's Ok to not be OK" and even more importantly, it is more than OK to ask for help.
- **Show that Self-Care isn't Selfish** create a self-care plan and prioritize it. Encourage your friends and family including children to allocate time for what inspires and refreshes them.
- **Talk about Orchard Place** including why it matters to you and its transformational impact on youth and their families. Increasing community awareness helps other families, volunteers, and donors learn about us.
- **Take time to Celebrate** the small victories and the big steps, relationships, and simple pleasures like the return of sunny weather. Collectively, we're celebrating being voted as "Top Non-Profit Organization" of the Year!

Sanctuary On!



Anne Starr, M.S.W.
Orchard Place CEO



Forever Friends of Orchard Place Harriet & Locke Macomber

When children make their first friends, they often promise to be “friends forever.” There is something about those friendships that sets them apart and gives them staying power. Orchard Place youth and the families we serve have found *forever friends* in Harriet and Locke Macomber. After a lifetime of giving of their time and treasure, they ensured their generosity would continue to impact the causes they cared about *forever*.

Their estate includes an anticipated \$5 million legacy gift to establish an endowment benefiting Orchard Place. The **Harriet S. and J. Locke Macomber Orchard Place Fund** will be administered by the Community Foundation of Greater Des Moines. The Fund’s purpose is to initiate innovative programs to impact children’s mental health in Central Iowa.

“This is the single largest gift in our 135-year history,” said Orchard Place CEO Anne Starr. “It is fitting that Harriet and Locke who, during their lifetimes, cared so deeply about the youth and families we serve, will continue their lifegiving impact on our mission of developing strong futures for youth facing mental, emotional, and behavioral health challenges.”

“Locke first joined the Orchard Place Board in 1969 and served as treasurer from 1970 through 1979,” said Chief Financial Officer Val Saltsgaver, “Locke was significantly involved in the oversight and management of our endowment fund and other investments. Locke became Board president in 1979 and played an instrumental role in expanding Orchard Place Campus to 10 acres. After Locke’s Board service ended in 1983, he and Harriet continued to give generously to many Orchard Place projects.”

“Their family’s loyal and generous giving history with Orchard Place spans more than 50 years,” added Starr, “Thanks to this \$5 million transformational gift, their legacy will live on forever. We are forever grateful.”

Harriet and Locke joined the Elizabeth Mann Society when they did their estate planning and chose to include Orchard Place as the beneficiary of a legacy gift.



Locke was one of the first men to serve on the Orchard Place Board and its third male president. Our Boards including the preceding Des Moines Children's Home and the Home for Friendless Children were comprised of all women until the mid-1960s when men were allowed to join.

Earl Kelly, past CEO of Orchard Place, remembers Locke driving a rusty 1983 Lincoln Continental. Earl used to ask Locke when he was going to get rid of that old car. Locke would respond, "Why would I want to get rid of it? It still runs and gets me where I need to go."



Harriet and Locke were longtime patrons of philanthropic causes and the arts in greater Des Moines.



In the early 2000s, Harriet made a \$175,000 gift to the PACE Capital Campaign in memory of Locke. Our PACE building at 620 8th Street in Des Moines was formerly home to the First Baptist Church which Locke's ancestors helped found.



Why I Serve...

I have seen first-hand how mental health can strain and put stress on an otherwise strong family. From growing up with a father with mental health challenges that were a family secret to my own personal experience with depression following the loss of a child, I have seen with my own eyes how important good mental health and coping mechanisms are in our lives.

As a mother of two sons, I always strive to build their confidence, but I know that not all families have the same opportunities we do. Whether the circumstances involve homelessness or parents working multiple jobs to pay the bills, tough situations can lead to extra stress and impact the mental health of children.

“ I so proudly joined the Orchard Place Board because I want every child to thrive, and grow, and find confidence and coping skills to live a life that’s meaningful and brings them joy.”

May we start each day with smiles and gratefulness and may we end each day learning from the challenges put in our path!

Jackie Johansen

President, Orchard Place Foundation Board

Welcome Keesha Ward

Please join us in welcoming Keesha Ward to Orchard Place as Director of Diversity, Equity, and Inclusion. This newly created leadership role will add DEI expertise to our management team, providing a high level of support on a day-to-day basis while advancing our collective work in building culture, providing education and support, and forming community partnerships.

Keesha brings over 11 years of experience in leadership, institutional policy making, management, and process improvement – all while promoting accountability and awareness regarding justice, equity, diversity, and inclusion.

Keesha earned her Bachelor of Science in Child, Adult, and Family Services at Iowa State University, followed by her MBA. She’s also earned a DEI in the Workplace certificate from the University of Florida.



Keesha Ward, MBA

Director of Diversity, Equity, and Inclusion



FuseDSM Awards - Orchard Place honored as Non-Profit of the Year

FuseDSM, our local chamber, hosts annual awards and top honorees are determined through a vote of FuseDSM members and the broader community. Orchard Place was nominated and selected for Non-Profit of the Year for demonstrating strong ethical standards, leadership among employees, and being actively engaged toward helping those in the East, North or South Des Moines community.

VOLUNTEERS - WE NEED YOU!



From one-on-one mentoring opportunities with youth on Campus, to summer lunch buddies at PACE, to ways for your work team, friends, or family to volunteer together, there's something for everyone. Check out our website -www.orchardplace.org/get-involved/volunteer or reach out to Brandie Broadhead at bbroadhead@orchardplace.org

Welcome Jenna Turner

Please join us in welcoming Jenna Turner as our Director of Corporate Partnerships and Individual Giving. While she's new to the development team, Jenna knows first-hand the impact donors and volunteers make on our mission. Jenna previously served as the Enrichment Coordinator at our PACE Center and as a caseworker collaborating with schools and families to resolve obstacles to school attendance - a key factor to student success.

Jenna Turner

Corporate Partnerships & Individual Giving





Mission Impact - Developing Strong Futures

One of our physician assistants Terra received a motivating call from a parent whose son had been cared for on Campus. The mom started by thanking Orchard Place for “refusing to give up on their son even when it got difficult. We really thought his future was headed toward prison.”

The mom went on to share that her son is graduating from high school and has completed driver’s education. He’s moved from a group home to living independently. He found and has kept a good job with benefits and has been so successful managing his bills and finances that he no longer needs a guardian.

His parents emphasized how thankful they are to their son’s team at Orchard Place “for changing the trajectory of his future.”

What makes this mission impact story even sweeter? The former Campus client recently visited Orchard Place to personally thank his care team members for helping him develop a strong future through getting effective treatment and building coping and life skills.

Challenge Grant from Roy J. Carver Charitable Trust leads to \$400,000 in capital improvements at PACE

The Board of Trustees of the Carver Charitable Trust approved a \$200,000 grant for PACE capital projects if Orchard Place could raise an additional \$200,000 in new donations and pledges for the projects within one year. We’re excited to share that we’ve met this challenge! Please join us in thanking the Carver Charitable Trust and these mission-driven, challenge-inspired donors:

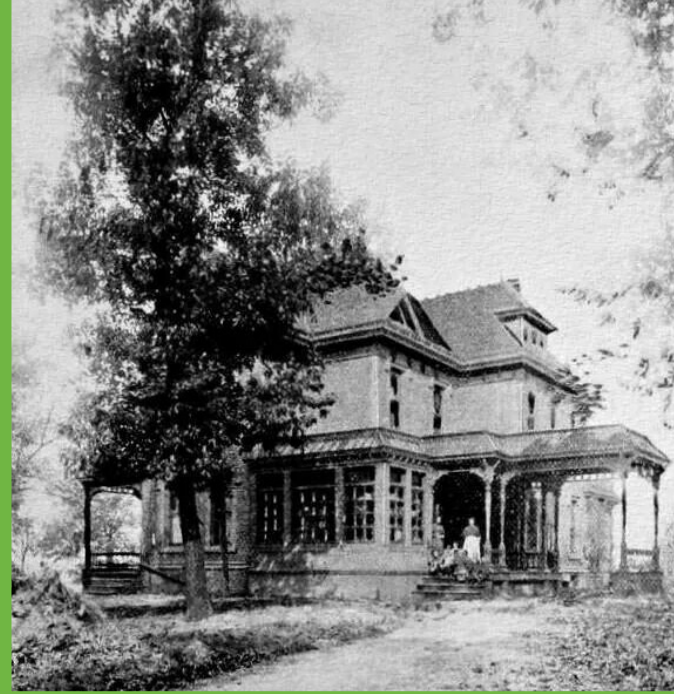
Fred Maytag Foundation	\$60,000
EMC Insurance Foundation	\$50,000
Storey Kenworthy	\$20,000



Plus, individual contributions were made by Larry Stelter & Peggy Fisher, the Gartner Family Foundation, Michael & Barbara Gartner, Elizabeth Eddy, and the Harriet S. and J. Locke Macomber Orchard Place Fund. All of these funds are making it possible for PACE to complete needed capital projects that include replacing the HVAC system, roof, and windows.

Elizabeth Mann Society

On a cold November morning in 1886, a three-day-old baby boy was left on the doorstep of a prominent Des Moines family. Within 24 hours, Elizabeth Mann and two of her friends established the Home for Friendless Children, the city's first orphanage. It was later renamed the Des Moines Children's Home and evolved into the leading nonprofit we know today as Orchard Place. Named after our founder, we welcome you into the Elizabeth Mann Society when you establish a future planned gift of any amount or percentage designated to Orchard Place.



GIFTS THAT QUALIFY FOR SOCIETY MEMBERSHIP

- Bequest in Will or Trust
- Life Insurance
- Retirement Fund
- Charitable Gift Annuity
- Donor-Advised Fund
- Endowment
- Real Estate
- Valuable Property

WHAT WILL YOUR LEGACY BE?

A Legacy Gift shows your commitment to our mission and the youth we care for at Orchard Place. It can celebrate and honor your life, family or a friend and declare what is most important to you. It allows you to make a lasting impact on the future aligned with your personal values and principles.



WE'RE HERE TO HELP

Orchard Place Foundation staff members are available to help you and your financial advisor with your charitable estate planning. Call 515.287.9648 or Email giving@orchardplace.org. Visit our website - www.orchardplace.myplannedgift.org



CONNECTIONS

ORCHARD PLACE • SPRING/SUMMER 2022

YOU CAN HELP DEVELOP STRONG FUTURES

To make a gift to Orchard Place or schedule a personal tour, please contact:

Wendy Ingham, Vice President of Development
925 SW Porter Avenue
Des Moines, Iowa 50315
Phone: (515) 287-9610
wingham@orchardplace.org

2116 GRAND AVE • DES MOINES, IA • ORCHARDPLACE.ORG • 515.246.3514



JULY 16 - 9:30 PM

**FUNDRAISER
FOR CHILDRENS
MENTAL HEALTH**



MOONLIGHTCLASSICDSM.COM